

# STRUCTURGRUPPEN AB

Your partner in industrial heating

**NIBE** GROUP MEMBER

## INDUSTRIAL PROCESS FLOW HEATING

---

Thermal Oil - Hot Water - Steam  
The complete heating solution



## PROCESS FLOW HEATING

### Why process flow heating?

There are a number of reasons for choosing a process flow heating system over direct electrical heating. Larger surface for heat transfer, temperature stability, possibility to change the amount of transferred energy without a change in temperature and many more.

The choice between heating by combustion, electricity or steam depends on the application and the availability to each energy source, together with local regulations.

There are a number of advantages and disadvantages between the different sources and our experience will help our customers to find the most suitable solution to their needs.

### Why Structurgruppen AB?

#### Know how

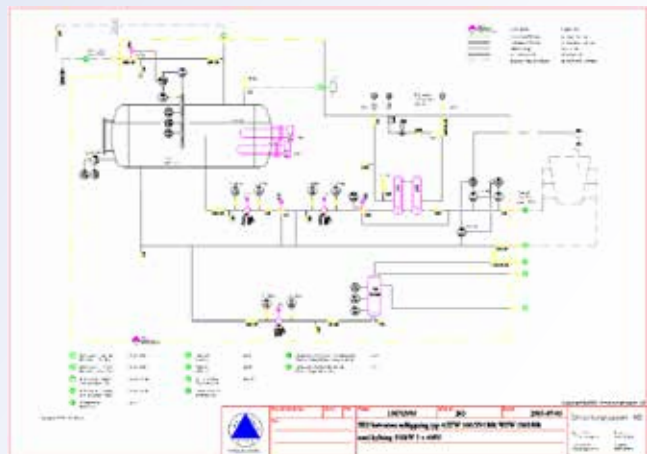
- Evaluation & Research
- Engineering
- Manufacturing
- Documentation & Regulations
- Commissioning
- Service
- Support

#### Quality

- High dependability
- Long life time
- Low maintenance

#### Economy

- High efficiency
- Low maintenance cost



### Service

Structurgruppen AB offer service and support on most process flow heating systems, including:

- Security check
- Troubleshooting
- Service and replacement of broken parts
- Application analysis
- And more....

Contact us for further information.

## FIRED HEATERS



### SPECIFICATIONS

#### Fuel types

Oil, Gas, Solid fuel, Special fuels

#### Process medium

Thermal oil, Hot water

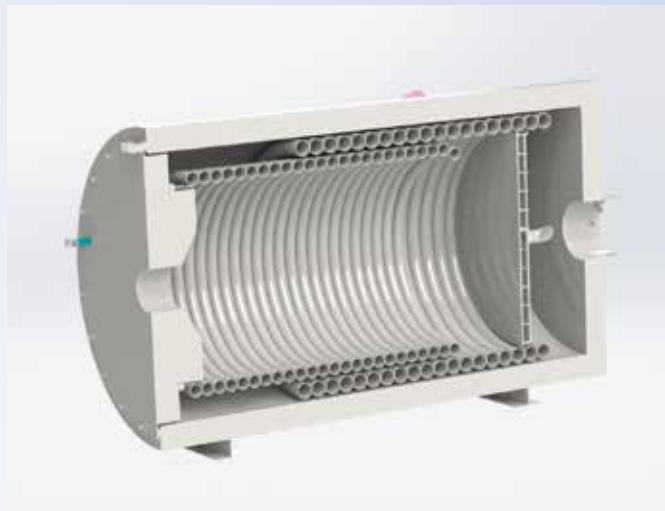
#### Temperature range

Thermal oil: <400 °C

Hot water: from 120 °C to 230 °C

#### Power output range

From 100kW to 25 000kW



### VERSATILE CONSTANT TEMPERATURE BURNER

- For vertical or horizontal installation.
- Burner position possible in several directions.
- Pre-assembled functional units for easier on-site installation.
- Thermal oil flooded, cooled, boiler rear wall for long service life.
- Optionally air pre-heater can be installed to increase the system efficiency up to 97%.



## ELECTRICAL HEATERS



### SPECIFICATIONS

#### Voltage

Standard 400V, other on request

#### Process medium

Thermal oil, Hot water

#### Temperature range

Thermal oil: <400°C

Hot water: <230°C

#### Power output range

From 20kW to 6 000kW

### ZERO EMISSION - 100% EFFICIENCY ELECTRICAL HEATER

- Direct heating in thermal fluid ensure all energy is transferred to the fluid.
- Compact design, enables installation in small spaces.
- ATEX-approved units available on request.
- No emissions enables installation also in workspaces, close to air inlets etc.

## HEAT RECOVERY



### SPECIFICATIONS

**Power medium**

Flue gas

**Process medium**

Thermal oil, Hot water, Air

**Temperature range**

Thermal oil: <400°C

Hot water: <230°C

Hot air: <300°C

**Power output range**

Up to 20 000kW



### INNOVATIVE CONCEPTS FOR ENERGY RECOVERY

The heat from flue gases (<1 200°C) is recovered with heat transfer fluids such as water, steam or thermal oil. Air is also possible as heat transfer media. The recovered energy can be used in other processes, which significantly increases the system efficiency.

No additional energy is required and a valuable contribution to protect the environment is made. It is a "Win – Win" solution!

## STEAM & THERMAL OIL HEATED SYSTEMS

### SPECIFICATIONS

#### Power medium

Thermal oil or Steam

#### Process medium

Thermal oil, Edible oil,  
Hot water

#### Temperature range

Thermal oil: <400 °C  
Edible oil: <240 °C  
Hot water: <230 °C





#### Power output range

Up to 15 000kW



### EFFICIENT USE OF AVAILABLE PROCESS ENERGY

- Large steam chamber allows staged transfer to consumers.
- Few limited operating conditions due to potential of re-evaporation.

						
	<b>DxS</b> Edible oil heating system, steam heated	<b>DxT</b> Thermal oil heating system, steam heated	<b>DxW</b> Hot water heating system, steam heated	<b>TxS</b> Edible oil heating system, thermal oil heated	<b>TxD</b> Steam boiler, thermal oil heated	<b>TxW</b> Hot water heating system, thermal oil heated
Heating medium	Steam	Steam	Steam	Thermal oil	Thermal oil	Thermal oil
Process medium	Edible oil	Thermal oil	Water	Edible oil	Steam	Water
Temperature range	60 °C - 240 °C	40 °C - 300 °C	40 °C - 240 °C	60 °C - 240 °C	100 °C - 240 °C	40 °C - 240 °C
Output range	30 kW to 5 000 kW	30 kW to 10 000 kW	20 kW to 10 000 kW	30 kW to 5 000 kW	80 kW to 15 000 kW	20 kW to 10 000 kW



## WATER BATH HEATERS



### SPECIFICATIONS

**Fuel types**

Diesel oil, Natural gas

**Process medium**

Gaseous media, liquid media

**Temperature range**

From 120°C - 230°C

**Power output range**

Up to 10 000kW

### SIGNIFICANT AND RELIABLE SAFETY MARGIN

Heating natural gas before decompression ensures that the gas temperature does not fall below the freezing point. Our water bath heaters are fully automatic and the indirect heating of gas by water provides a very safe application.



# STRUCTURGRUPPEN AB

Din partner inom industriell värme



**NIBE** GROUP MEMBER

We do more than process flow heaters.

After 35 years on the market we have a profound and wide experience of electrical heaters as well as steam generators and thermal oil systems. We have a wide range of ATEX-approved products if needed. Whatever your requirement might be, you can be sure that we can find the solution and provide you with the product you need.

Quality, Reliability and Support are the most important factors to the modern customer of today and this has always been and always will be our main focus.

Please do not hesitate to contact us for any questions regarding your heating requirement!

**Tel: +46 300 566400**

**Email: [info@structurgruppen.se](mailto:info@structurgruppen.se)**

**[www.structurgruppen.se](http://www.structurgruppen.se)**

More examples of products we can provide you with:

- Tubular elements
- Split cartridge heaters
- Immersion heaters
- PID Regulators
- Drum heaters
- Infrared Heaters (IR Heaters)
- Silicone heaters
- Heating tubes
- Thermal oil systems
- ATEX
- Cartridge heaters
- Band heaters
- Temperature sensors
- IBC Container heaters
- Ceramic heaters
- Pellets ignitors
- Silicone heating mats
- Hot water systems
- Loadbanks
- And many more...

